



**Nittany Cycling Classic**  
 Phillipsburg & State College, PA  
**April 19-20, 2014**  
 Held under USAC Cycling Event Permit



Schedule of Events

Saturday, April 19						Sunday, April 20		
Team Time Trial			Black Mo' Road Race			Frat Row Criterium		
Field	Start	Distance	Field	Start	Distance	Field	Start	Distance
Men D	8:00 am	9.5 miles	Men Intro **	9:30am	10 miles	Men D Div 1	8:30am	30 min
Women C	to follow	9.5 miles	Women Intro **	9:31am	10 miles	Men D Div 2	to follow	30 min
Women D	to follow	9.5 miles	Men C	10:15am	43 miles	Men C	to follow	40 min
Men Intro	to follow	9.5 miles	Men D	10:25am	21 miles	Men Intro **	to follow	20 min
Women Intro	to follow	9.5 miles	Men 5	10:35am	21 miles	Women C/D	to follow	35 min
5 minute break			Women C/D	10:40am	21 miles	Women Intro**	to follow	20 min
Men A	to follow	9.5 miles	Men A	12:45pm	64 miles	Men B	to follow	50 min
Men B	to follow	9.5 miles	Men B	12:55pm	43 miles	Women A/B	to follow	50 min
Men C	to follow	9.5 miles	Men 4	1:05pm	43 miles	Men A	to follow	60 min
Women A	to follow	9.5 miles	Women A/B	1:10pm	43 miles			
Women B	to follow	9.5 miles						

\*\* Intro riders will meet 30 minutes before race for clinic; listen to race announcements for details.

**Contact Info:** Andrew Artz, (717) 841-4621, andcraftss@gmail.com

Collegiate fields are open only to full time collegiate students with valid USAC Collegiate licenses and full time high school students with valid USAC Junior licenses. Jerseys and bibs for all such riders must feature school names and/or logo, or be generic blank kits; non-scholastic club and trade team kits are not permitted. In addition, new non-collegiate women racers with 1-day or first time Category 4 licenses may enter Collegiate Women's Intro fields. USA Cycling licenses available for sale on-site. Consult the ECCC website at <http://collegiatecycling.org/eccc> for more information on categories, eligibility, licensing, and other general questions.

**Registration Fees:** Team Time Trial - \$25/team, Collegiate Criterium & Road Race - \$20; USAC Road Race - \$40.

**USAC Race Prize Money:** Road Race: Men 4 - \$250/5 places; Men 5 - medals/3 deep.

Pre-Registration is available on-line at BikeReg.com, where service charges might apply. Registrations not received before 5pm on April 17th will incur a \$5 per rider per event late fee. Large ECCC Teams may submit a spreadsheet with the following information: Rider Name, USAC License Number, Race Category and Races being entered for each rider. This spreadsheet must be sent to [eccc.road@gmail.com](mailto:eccc.road@gmail.com) and received by April 17th at 5pm in order to avoid a \$5 late registration fee per rider per event.

Registration is located at the Group Tenting Area of Black Moshannon Park for the Saturday races, and nearby the finish line on Locust Lane for the Sunday races. It opens 1 hour before the start of the first scheduled race and ends 15 minutes before the start of each race.

Promoter is not required to refund pre-registration in an event of an unforeseen cancellation.

**Medical:** Ambulance and EMT services will be provided by Centre LifeLink on Saturday for the road race and team time trial. On Sunday, ambulance coverage will come from Penn State's University Health services. Both days, racers will be transported to the emergency room at Mount Nittany Medical Center. Mount Nittany Medical Center contact info : 1800 E Park Ave, University Park, PA, 16803, 814-231-7000

**ECCC Host Housing:** Sign up as a host housing guest or provider via forms on the calendar at <http://collegiatecycling.org/eccc/calendar>. Contact the host housing coordinator Rose Long at [rose.long@mssm.edu](mailto:rose.long@mssm.edu) with any questions. All host housing recipients are required to marshal during the weekend's races.

**Directions to TTT/Road Race:**

**From the North:** Take I-80 to Exit 161, I-99 south (see below for directions from I-99).

**From South:** Take I-70/76 to Exit 146, I-99 north (see below for directions from I-99).

**From State College(Business 322 W/Atherton St):**

Continue West on Business 322. Will become freeway. Immediately thereafter, take exit toward I-99/US 220/US 322 and head south on I-99 (see below for directions from I-99).

**From I-99:** Take Exit 62 (southbound) or Exit 61 (northbound) for US 322 West. Just before village of Phillipsburg, make a right onto PA 504 east and proceed towards Black Moshannon. Turn right on Beaver Rd to get to **Group Tenting Area (on the right)**. **NOTE: Beaver Rd will be closed during the Team Time Trial; if you arrive on site after the TTT starts, use the alternate parking lot off of PA 504 just after Beaver Rd intersection (see map below).**

**Directions to Criterium:**

**From the North:** Take 87 S to 84 W to 81 S to I- 80 W (see below for directions from 80).

**From the West (Pittsburgh):** Take 22 E to I-99/ US 220 N towards Altoona. Exit onto US-322 BUS E/N Atherton St. Continue 4.3mi and turn left on to W Fairmount Ave.

**From South (Route 322 W):** Exit onto US-322 BUS W/Boal Ave toward Atherton St/Boalsburg. Continue 4.8mi, turn left onto W Fairmount Ave.

**From I-80:** Take exit 161 towards Bellefonte. Follow signs to US-220S/26 S and continue 11 miles. Take exit 73 to merge onto US-322 E toward State College/Lewistown. In 1mi take PA-26 exit toward State College and turn right onto E College Ave. In 1mi take the University Dr exit toward PSU, then turn left at University Dr. Continue .2mi, then turn left on Foster Ave. Continue .4mi to crit course.

**Lodging:** Nearby hotels and motels that are available close to the race venue are the following:

- Sleep Inn, 111 Village Drive, State College, PA 16803, 814-235-1020, [http://www.sleepinn.com/hotel-state\\_college-pennsylvania-PA421](http://www.sleepinn.com/hotel-state_college-pennsylvania-PA421)
- Comfort Suites, 132 Village Drive, State College, PA 16803, 814-235-1900, [http://www.comfortsuites.com/hotel-state\\_college-pennsylvania-PA276](http://www.comfortsuites.com/hotel-state_college-pennsylvania-PA276)

**TTT Race Course Description:**

This rolling 9.5 mile course uses some of the same roads and start/finish line as the road race. Race starts northwest on Beaver Rd and takes a left onto SR 504. After the bridge, bear right onto Casanova Rd. 2 consecutive lefts (follow marshals) will return you to SR 504 and back to the park. After the bridge, take a right onto Beaver Rd and proceed southeast until the turnaround at the top of the climb before the road race decent. It returns to finish about 1/4 mile short of the tenting area entrance. **Parking available in the organized tenting area near the start/finish. No aero equipment (USAC mass start legal only) allowed in collegiate races.**

**Road Race Course Description:**

This 21.4 mile loop, in and around Black Moshannon State Park, features 3 climbs and 1874 feet of climbing per lap in the challenging Pennsylvania countryside. Course heads southeast on Beaver Rd to the top of the park and then a screaming downhill brings you to the first left turn onto Dix Run Rd. Proceed northeast along rolling terrain until you make a left onto Barney Rd. Proceed northeast until end of road (at end of downhill) to take a left onto SR 504. SR 504 features a steady but painful ~5 mile climb, with the feed zone at top of Black Moshannon Mountain, before mile 17 on the course at the weather station. After some rollers, the road presents another screaming downhill to a left at the bottom onto Beaver Rd (**CAUTION AND SLOW DOWN ON THIS TURN!!!!**) Finish of lap is just before entrance to the tenting area. After finishing, please watch for traffic and bear left into the tenting area; do not congregate on roadway as it is open to traffic. Start and parking is the same as the TTT.

**Criterium Race Course Description:**

A flat, 1K long, 6 turn course right in the heart of downtown State College. Parking is available along any of the streets adjacent to the race course.

**Parking Notes (IMPORTANT):**

We are not allowed to park near the intersection of Beaver Rd and SR 504. This is a public parking lot, and the Park wants to keep it open for any non-bikers that want to enjoy the park that day.

We can park in two different areas. The first is the Organized Tenting Area (RED TEXT). The Penn State team used this area in the past, and we basked in the glory of a fireplace to warm our wet clothes once we finished our TTT. The second proposed parking area is the tiered parking (BLUE TEXT) right off the intersection of SR 504 and Beaver Rd. This is near the corner just at the bottom of the first descent, right before the start finish line. If parking here, be aware that this is an active intersection for the race.



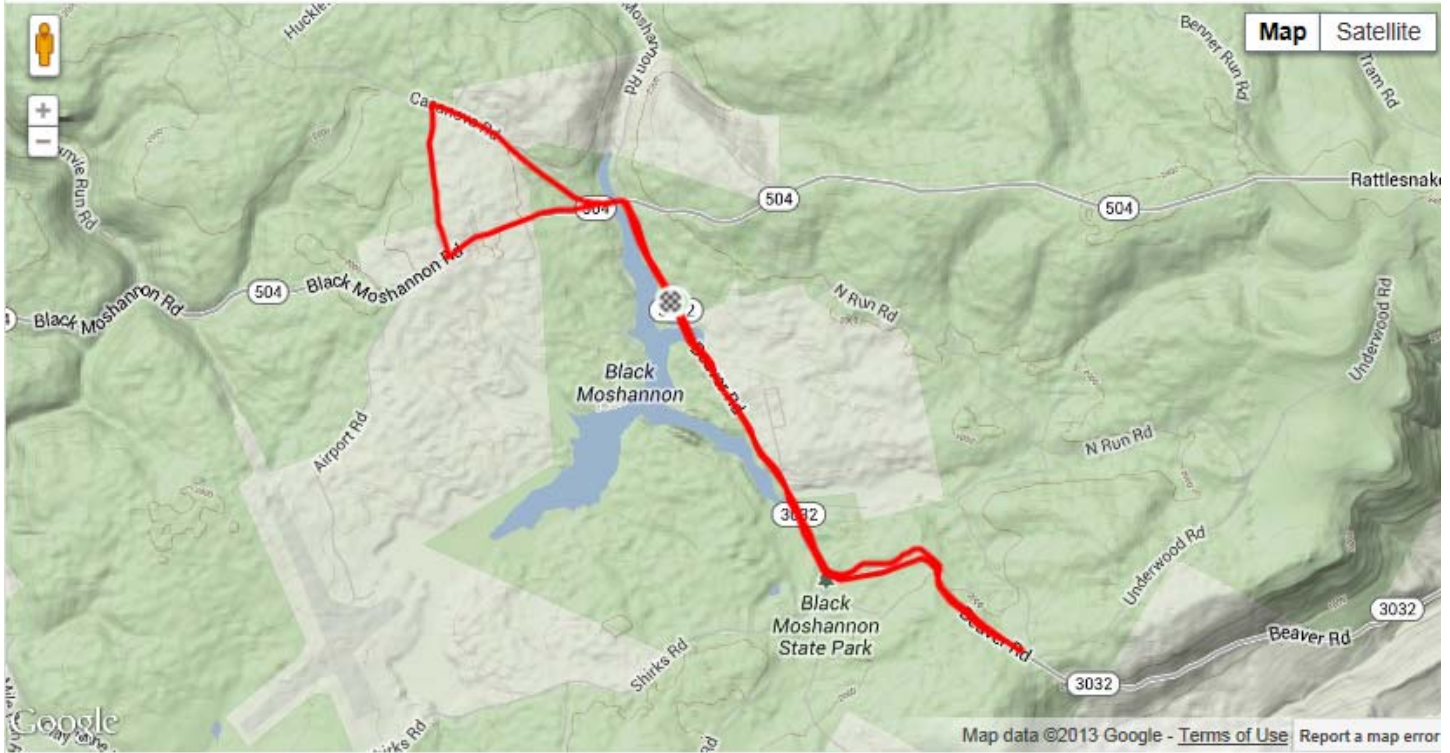
Course Maps:

TTT

# ★ Black Moshannon TTT

Philipsburg, PA

**9.4 mi**   **-0.0%**   **1,863 ft**   **2,080 ft**   **217 ft**  
Distance   Avg Grade   Lowest Elev   Highest Elev   Elev Difference

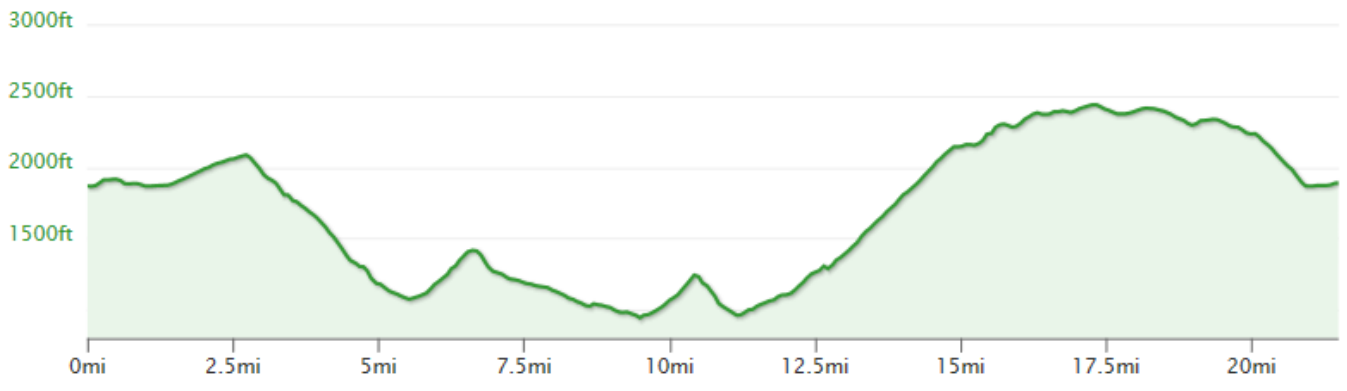


Road Race:



Philipsburg, PA

21.5 mi   0.0%   943 ft   2,439 ft   1,496 ft  
Distance   Avg Grade   Lowest Elev   Highest Elev   Elev Difference

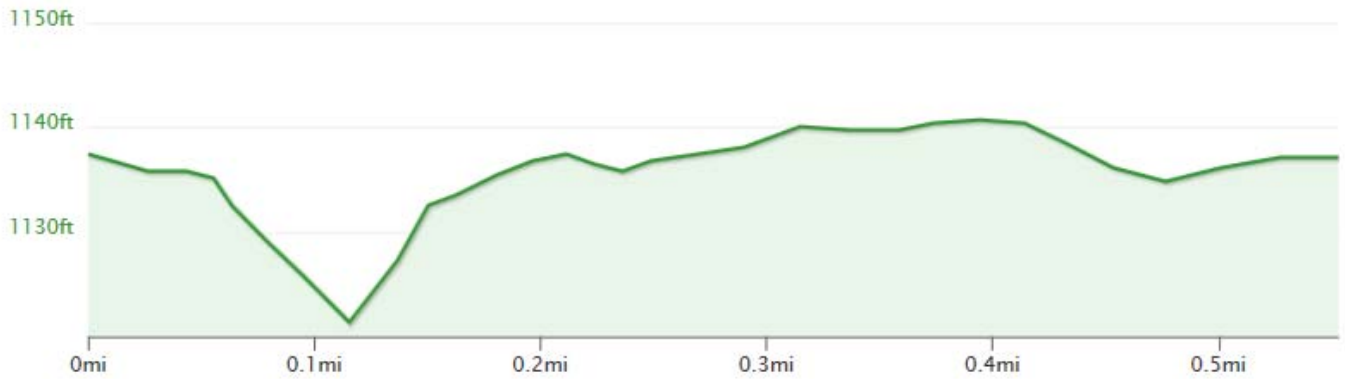
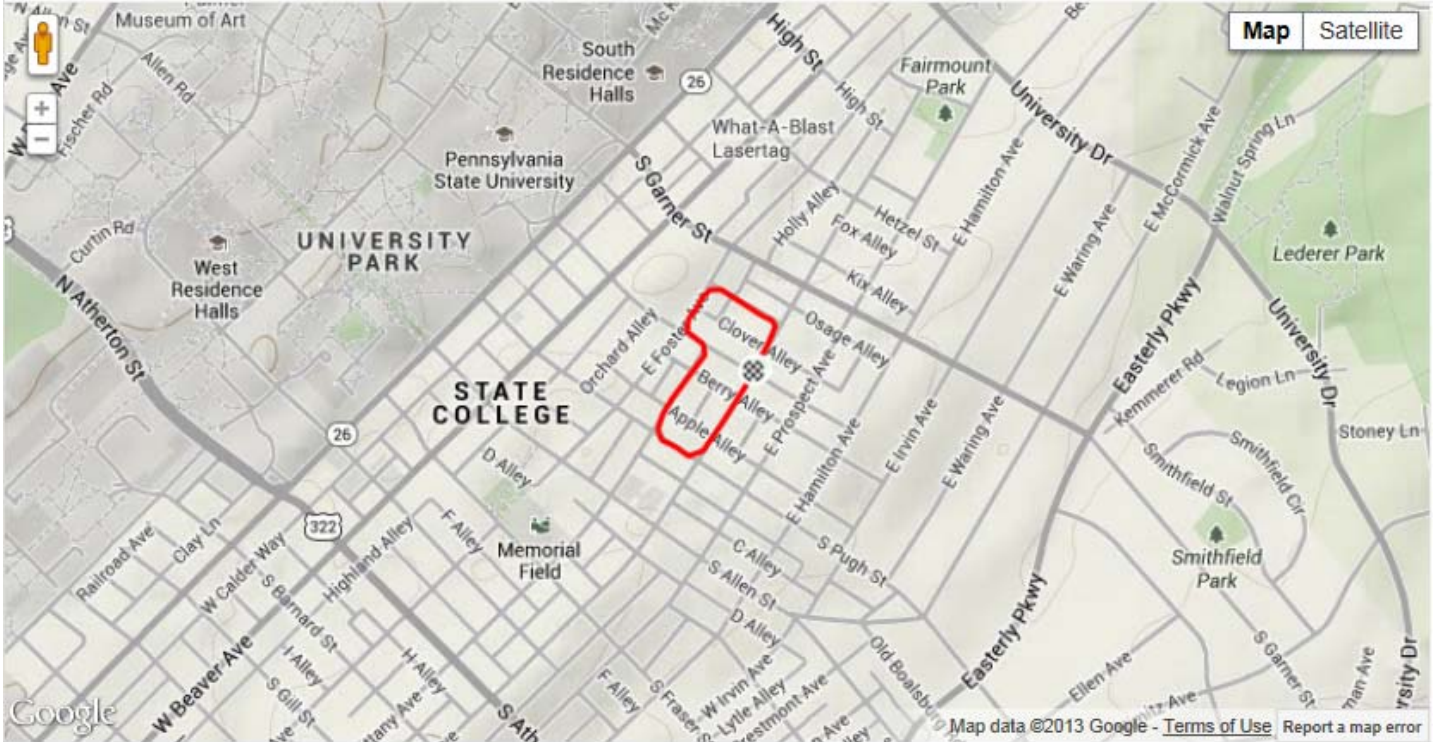


Criterion:

## ★ Frat Row Criterion

State College, PA

0.6 mi   -0.0%   1,121 ft   1,141 ft   19 ft  
Distance   Avg Grade   Lowest Elev   Highest Elev   Elev Difference



**Race Sponsors**